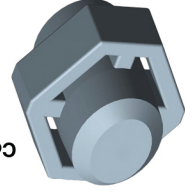
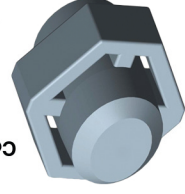


Composite Flow Technology
(CFT Core)
Asymmetric



Composite Flow Technology
(CFT Core)
Asymmetric



Composite Flow Technology
(CFT Core)
Asymmetric

LB	RG	Diff	Mid
16	2.51	.042	.023
15	2.53	.042	.023
14	2.54	.042	.023
13	2.58	.036	.019
12	2.64	.024	.013

LB	RG	Diff	Mid
16	2.51	.042	.023
15	2.53	.042	.023
14	2.54	.042	.023
13	2.58	.036	.019
12	2.64	.024	.013

LB	RG	Diff	Mid
16	2.51	.042	.023
15	2.53	.042	.023
14	2.54	.042	.023
13	2.58	.036	.019
12	2.64	.024	.013

Coverstock
S70 Solid
Finish
2000 Grit Polished

Coverstock
S70 Solid
Finish
2000 Grit Polished

Coverstock
S70 Solid
Finish
2000 Grit Polished

The Protocol features an industry first **CFT Core (Composite Flow Technology)** that allows for better mass property stabilization after drilling, resulting in a big backend and easy transition on medium-heavy oil.

More Info: 900global.com
More Flip Cards: bowlingdisplays.com

The Protocol features an industry first **CFT Core (Composite Flow Technology)** that allows for better mass property stabilization after drilling, resulting in a big backend and easy transition on medium-heavy oil.

More Info: 900global.com
More Flip Cards: bowlingdisplays.com

The Protocol features an industry first **CFT Core (Composite Flow Technology)** that allows for better mass property stabilization after drilling, resulting in a big backend and easy transition on medium-heavy oil.

More Info: 900global.com
More Flip Cards: bowlingdisplays.com